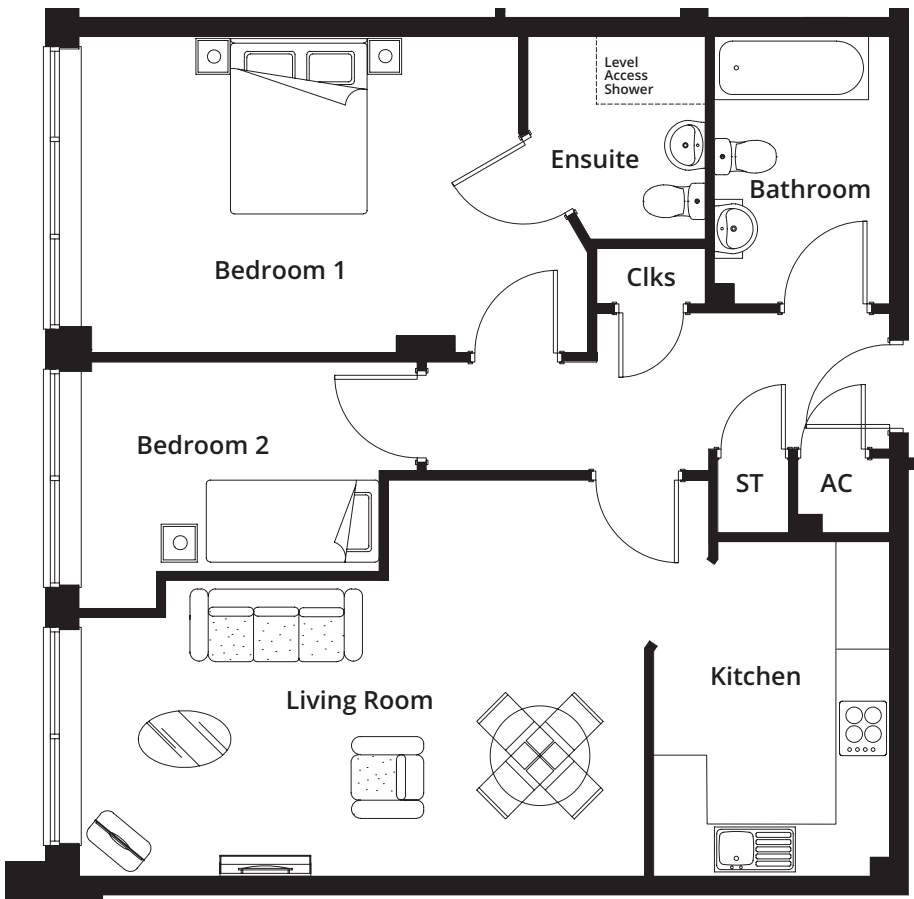
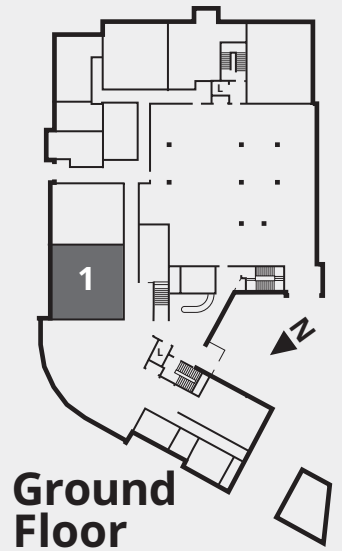


honeybourne gate **hg**

Two bedroom
apartment:

1



Total internal
floor area:

79.8m²

Living Room

5.60 x 3.95m (18'4" x 12'11")

Kitchen

3.30 x 2.35m (10'10" x 7'8")

Bedroom 1

4.98 x 3.15m (16'4" x 10'4")

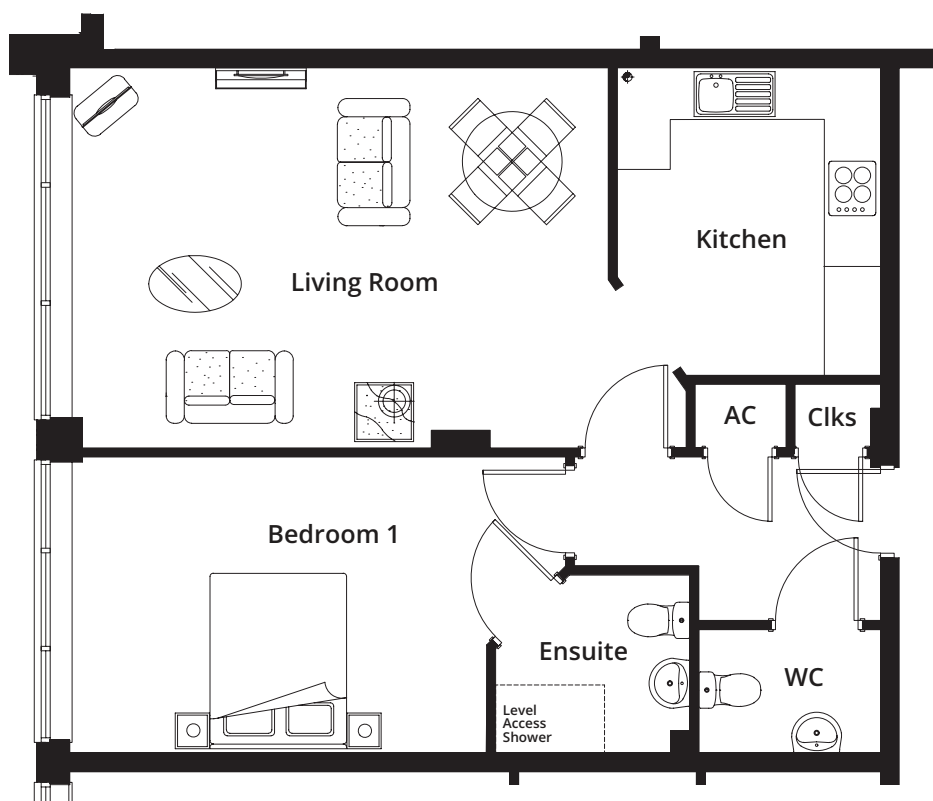
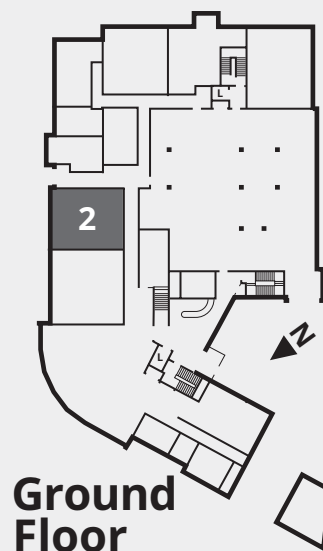
Bedroom 2

2.90 x 2.11m (9'6" x 6'11")

honeybourne
gate **hg**

One bedroom
apartment:

2



Total internal floor area: **66.1m²**

Living Room

5.30 x 3.80m (17'5" x 12'6")

Bedroom 1

4.10 x 2.95m (13'5" x 9'8")

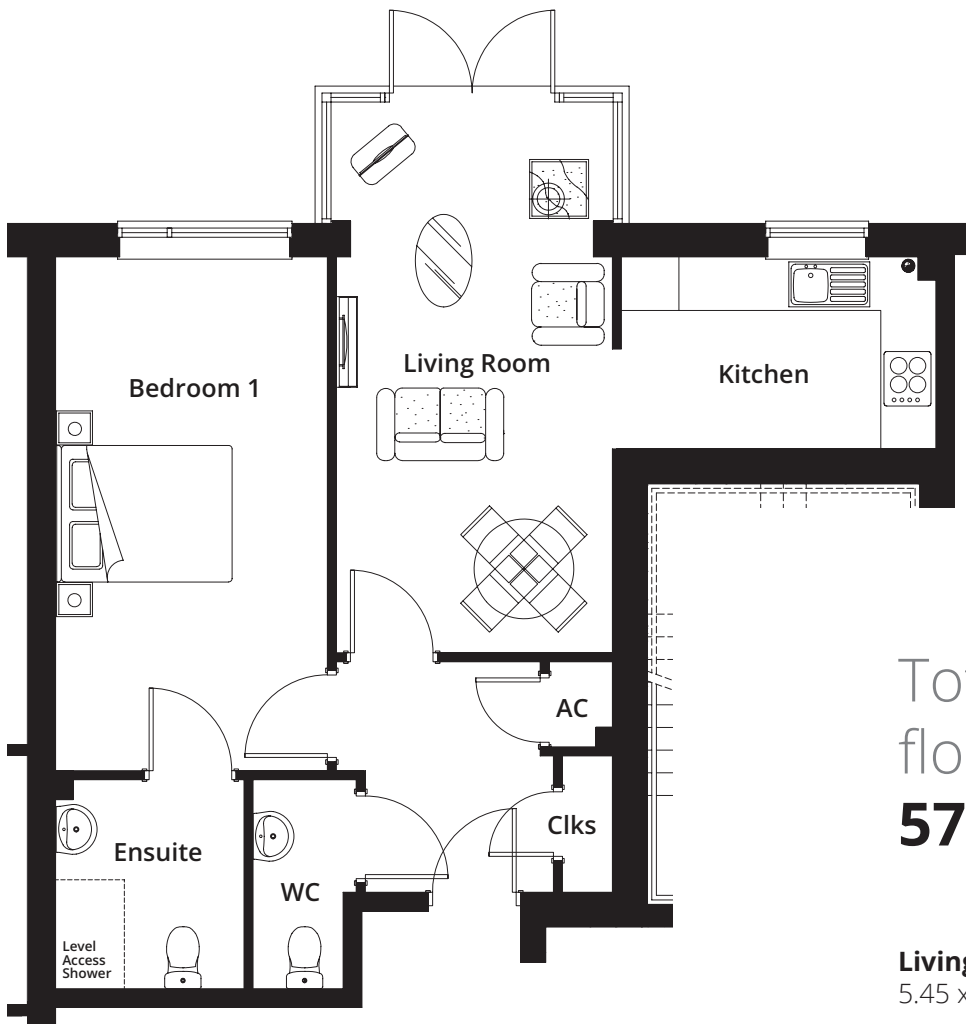
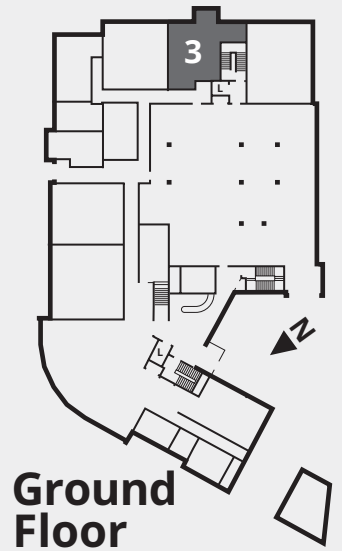
Kitchen

3.10 x 2.60m (10'2" x 8'6")

honeybourne
gate **h g**

One bedroom
apartment:

3



Total internal
floor area:

57.4m²

Living Room

5.45 x 2.75m (17'11" x 9')

Kitchen

3.15 x 1.90m (10'4" x 6'3")

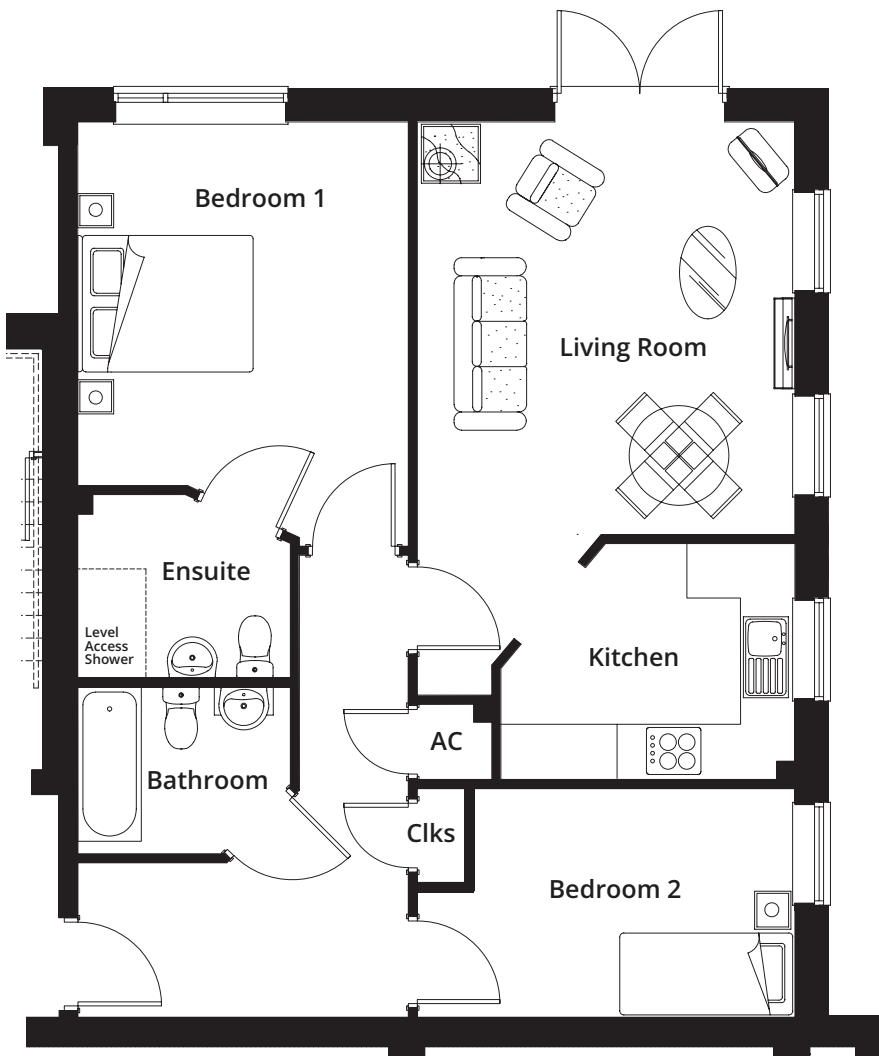
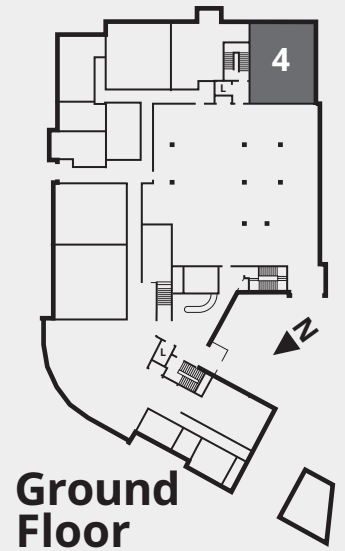
Bedroom 1

5.10 x 2.70m (16'9" x 8'10")

honeybourne gate **hg**

Two bedroom
apartment:

4



Total internal
floor area:

78.9m²

Living Room

4.10 x 3.70m (13'5" x 12'2")

Kitchen

2.90 x 2.35m (9'6" x 7'8")

Bedroom 1

3.60 x 3.30m (11'10" x 10'10")

Bedroom 2

3.70 x 2.25m (12'2" x 7'5")